



11117
OPERATING

Missile Launcher with Exploding Car

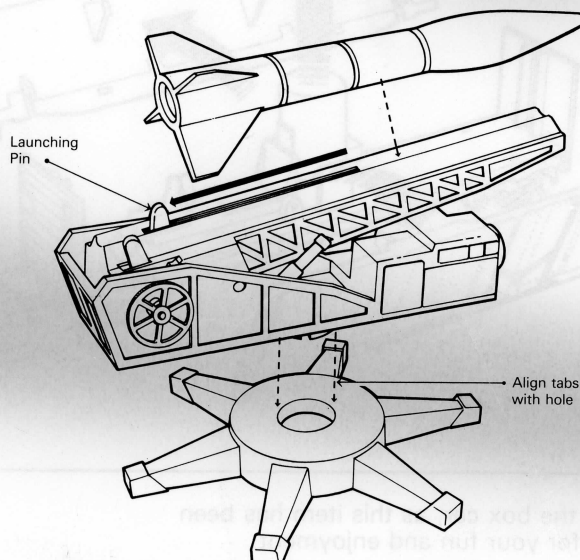
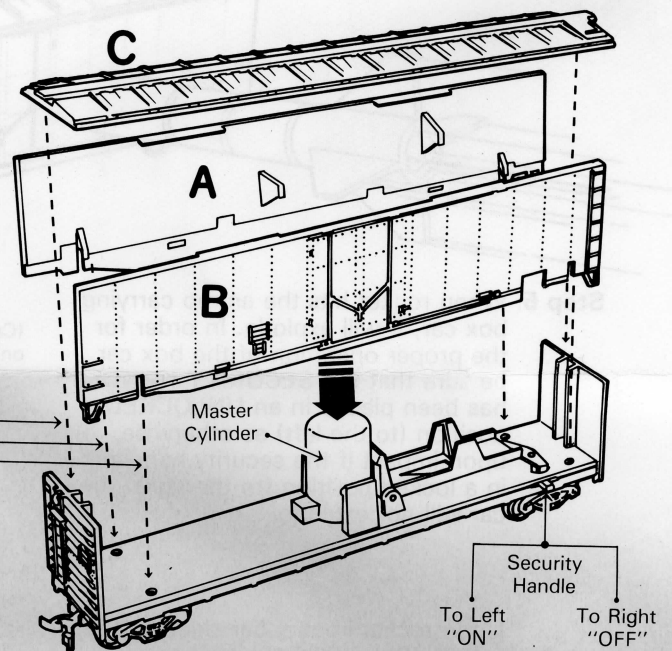
ASSEMBLY INSTRUCTIONS

Your exploding box car and missile launcher have been designed with careful consideration for assembly and operation. Carefully follow these instructions for its assembly and operation for maximum amount of thrilling enjoyment.

EXPLODING BOX CAR

- Step 1.** Push down master cylinder.
- Step 2.** Place security handle in lock position (to the right).
- Step 3.** Assemble sides A, B and roof C; note that tabs on bottom of sides have been offset so that each side assembles in the correct position.
- Step 4.** To operate, place car onto track and **REMEMBER** to move security handle into operating position (to the left).

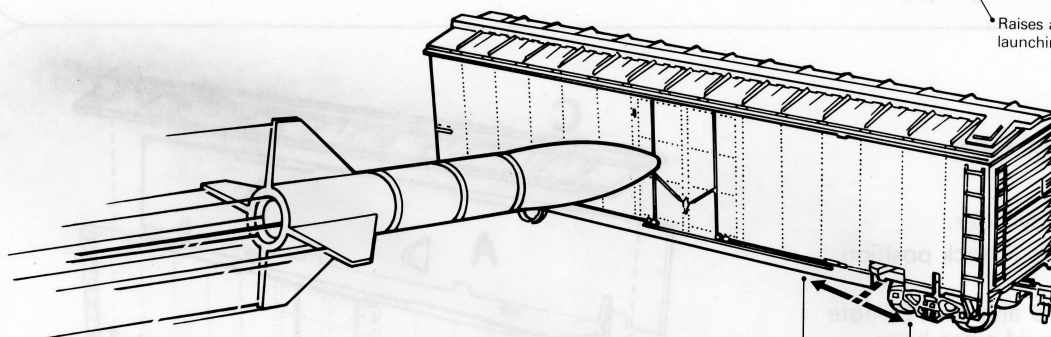
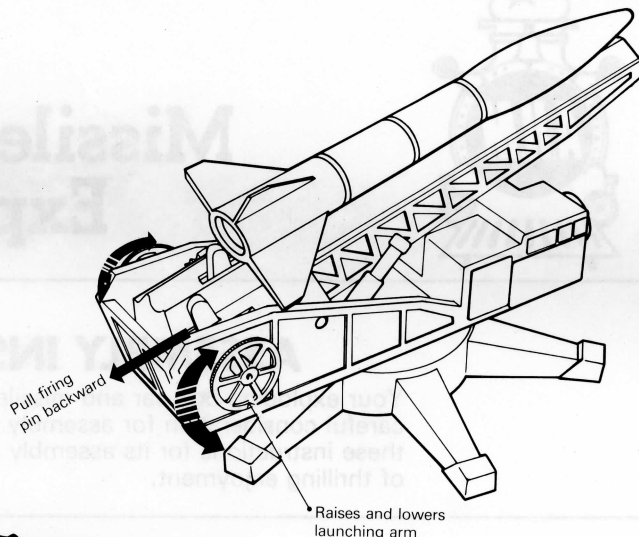
Align tabs with
holes in base of
car



ROCKET LAUNCHER

- Step 1.** Place main carriage into base of rocket launcher by carefully pressing the tabs into the center hole position.
- Step 2.** To prepare rocket launcher for firing, pull launching pin backward on launcher.
- Step 3.** Place rocket onto launcher, be sure that fin of rocket has not been placed into slot from the launching pin.

Step 4. Rocket launcher can now be pivoted left or right or raised and lowered by wheel on either side of launcher. In order to fire rocket, gently pull firing mechanism to rear. To reload launcher repeat steps 1, 2 and 3.

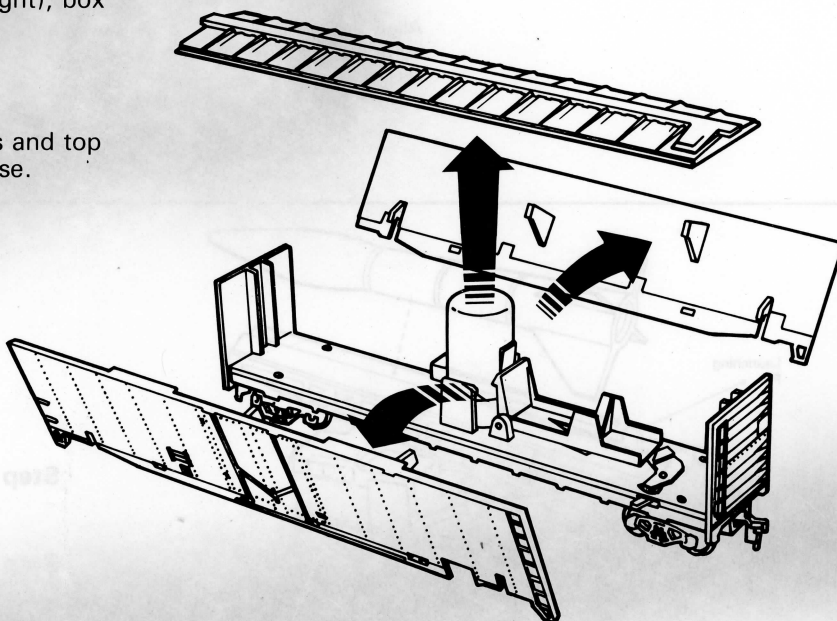


Step 5. When rocket hits the ammo carrying box car, it will explode. In order for the proper operation of the box car, be sure that the SECURITY HANDLE has been placed in an UNLOCKED position (to the left) as otherwise, upon impact if the security handle is in a locked position (to the right), box car will not explode.

ON
(Car will explode on rocket impact)

OFF
(Car will **not** explode on rocket impact)

Upon rocket impact car sides and top will "EXPLODE" from car base.



Remember only aim your launcher at the box car, as this item has been specifically designed for the purpose for your fun and enjoyment.