



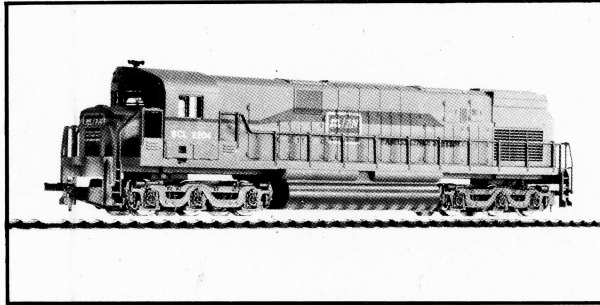
ASSOCIATED HOBBY MANUFACTURERS, INC.

(A Subsidiary of General
Hobbies Corp.)

5020-02 UNION PACIFIC
5020-03 SANTA FE
5020-04 U.S. ARMY
5020-05 BURLINGTON NORTHERN

SPARE COUPLER INCLUDED FREE FOR YOUR CONVENIENCE

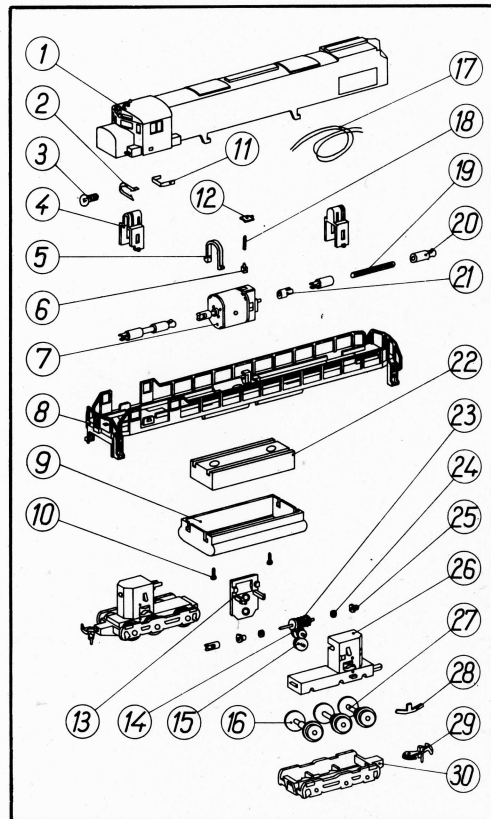
ALCO C-628



In the early 1960's Alco products inc. embarked on a program developing efficient high horse power locomotives to meet the demands of modern railroads. The Alco C-628 was designed with modern technology, high horse power and ease of maintenance in mind. At the time of introduction, this locomotive had the highest horse power of any locomotive in the industry, 2750 h.p. the Alco C-628 was designed to ride on six axle trucks and to be used on all types of railroads. This locomotive was the highest production of any of the century series locomotives. Alco C-628 locomotives have been used world wide from the United States, Mexico and all the way to Australia. Many of these Alco locomotives have continued to operate will into the 1980's.

ALCO C — 628 PARTS LIST

1. P 460 01 BODY SHELL
2. P 460 02 BULB RETAINER
3. P 460 03 LIGHT BULB
4. P 460 04 LIGHT HOLDER TRUCK MOUNT
5. P 460 05 MOTOR HOLDER
6. P 325 021 MOTOR BRUSH
7. P 325 020 MOTOR
8. P 460 06 UNDERFRAME
9. P 460 07 WEIGHT HOLDER
10. P 460 08 WEIGHT MOUNT SCREW
11. P 460 09 RETAINER CUP
12. P 325 017 BRUSH HOLDER
13. P 460 10 SIDE COVER GEAR BOX
14. P 460 11 IDLER GEAR
15. P 460 12 IDLER GEAR
16. P 460 13 WHEEL
17. P 460 14 HOOK UP WIRE
18. P 325 019 MOTOR SPRING
19. P 325 009 DRIVE SHAFT
20. P 460 15 COUPLER
21. P 460 16 COUPLER
22. P 460 17 WEIGHT
23. P 325 028 WORM GEAR
24. P 325 030 WASHER
25. P 325 02 BEARING
26. P 460 18 GEAR BOX
27. P 325 013 GEAR WHEEL
28. P 460 19 PICK UPS
29. P 325 015 COUPLER
30. P 460 20 TRUCK FRAME



LUBRICATION

For efficient, economical operation, proper lubrication is extremely important. Average lubrication time should be between every 8 to 12 hours running time. To lubricate axles (gears) and bearings, the shell is to be removed. Remove shell by taking out two screws under fuel tank, slide fuel tank forward. Now, remove the two screws under locomotive cab. CAREFULLY PULL BODY OF LOCO APART FROM FRAME. To lubricate the gears and the bearings, use only specified model railroad lubricant. NOTE: one drop of oil and grease are sufficient. (consult your local hobby retailer.) Now, lubricate the bearings of the motor and the gears of the trucks. Consult exploded view diagram.

HOW TO SERVICE ELECTRIC MOTOR

Remove body from the chassis. Take out the weight and remove the electrical contacts from motor. This will completely separate the motor from the chassis of the locomotive. The motor can now be serviced.

DO NOT REMOVE WORM GEAR UNLESS NECESSARY

ELECTRICAL DATA

Maximum Absorption — 0,30 Ampere
Maximum Voltage — 12 V DC

CAUTION

If it is necessary to overhaul or to replace any parts contact your local AHM Parts Depot.

Printed in Yugoslavia